

Recombinant Mouse M-CSF/CSF1 Protein

Catalog Number: EXRP001

EXREprotein™

More information: info@exreprotein.com

For Research Use Only. Not Intended for Diagnostic or Therapeutic Use.

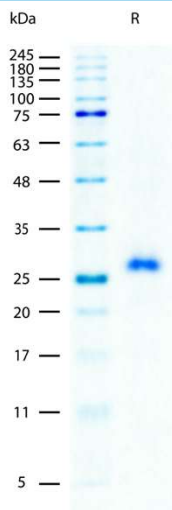
Product Details

Biological Activity	Determined by a cell proliferation assay using mouse M-NFS-60 cells. The ED ₅₀ for this effect is typically <10 ng/mL
Purity	>97% by SDS-PAGE and quantitative densitometry by Coomassie® Blue staining
Endotoxin	<1.0 EU per 1 µg of the protein as determined by the LAL method
Source	Expressed in <i>E. coli</i> . Disulfide-linked homodimer
Accession Number	Q3U4F9
Sequence	Lys33-Glu262, with an N-terminal Met MKEVSEHCSH MIGNGHLKVL QQLIDSQMET SCQIAFEFVD QEQLDDPVCY LKKAFFLVQD IIDETMRFKD NTPNANATER LQELSNLNS CFTKDYEEQN KACVTRFHET PLQLLEKIKN FFNETKNLLE KDWNIFTKNC NNSFAKCSSR DVVTKPDCNC LYPKATPSSD PASASPHQPP APSMAPLAGL AWDDSQRTEG SLLLPSELPL RIEDPGSAKQ RPPRSTCQTL E
Molecular Weight	26.1 kDa (monomer, predicted)
Formulation	Lyophilized from sterile PBS with Trehalose, pH7.4

Storage and Preparation

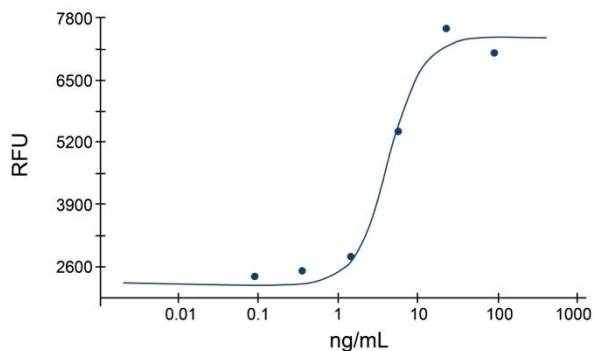
Shipping	Shipped at ambient temperature.
Stability and Storage	<ul style="list-style-type: none">12 months from date of receipt at -20°C to -70°C, lyophilized powder.3 months at -20°C to -70°C under sterile conditions after reconstitution. Avoid repeated freeze-thaw cycles.
Reconstitution	Reconstitute at 100 µg/mL in PBS.

Data Images



SDS-PAGE Data, Recombinant Mouse M-CSF
Recombinant Mouse M-CSF (2 µg/lane) on SDS-PAGE under reducing (R) conditions. The gel was stained using Coomassie® Blue showing a single band at 26 kDa and purity greater than 97%.

Recombinant Mouse M-CSF



Determined by a cell proliferation assay using mouse M-NFS-60 cells. The ED₅₀ for this effect is typically <10 ng/mL