

Recombinant Mouse IFN-gamma Protein

Catalog Number: EXRP038

EXREprotein™

For Research Use Only. Not Intended for Diagnostic or Therapeutic Use.

info@exreprotein.com

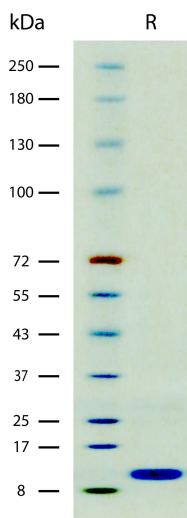
Product Details

Biological Activity	Determined by the ability to inhibit proliferation of WEHI-279 mouse B cells. The ED ₅₀ for this effect is typically <0.2 ng/mL
Purity	>95% by SDS-PAGE and quantitative densitometry by Coomassie® Blue staining
Endotoxin	<0.02 EU per 1 µg of the protein as determined by the LAL method
Source	Expressed in <i>E. coli</i> .
Accession Number	P01580
Sequence	His23-Cys155, with an N-terminal Met MHGTVIESLE SLNNYFNSSG IDVEEKSLFL DIWRNWQKDG DMKILQSQII SFYLRLFVFL KDNQAISNNI SVIESHLITT FFSNSKAKKD AFMSIAKFEV NNPQVQRQAF NELIRVVHQL LPESLKRKRK RSRC
Molecular Weight	15.6 kDa (predicted)
Formulation	Lyophilized from sterile PBS with Trehalose, pH 7.4

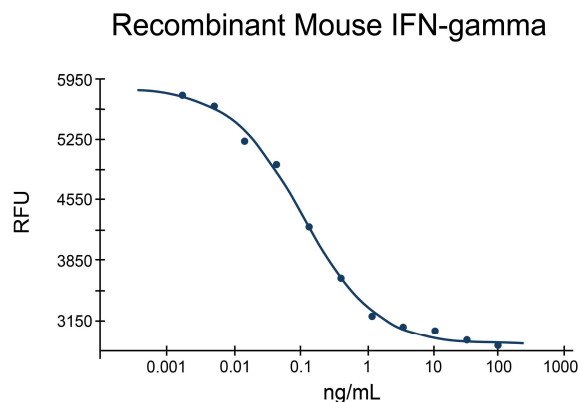
Storage and Preparation

Shipping	Shipped at ambient temperature.
Stability and Storage	<ul style="list-style-type: none">12 months from date of receipt at -20°C to -70°C, lyophilized powder.3 months at -20°C to -70°C under sterile conditions after reconstitution. Avoid repeated freeze-thaw cycles.
Reconstitution	Reconstitute at 100 µg/mL in PBS.

Data Images



SDS-PAGE Data, Recombinant Mouse IFN-gamma
Recombinant Mouse IFN-gamma (2 µg/lane) on SDS-PAGE under reducing (R) conditions. The gel was stained using Coomassie® Blue showing a single band at 11 kDa and purity greater than 95%.



Determined by the ability to inhibit proliferation of WEHI-279 mouse B cells. The ED₅₀ for this effect is typically <0.2 ng/mL.