

# Recombinant Mouse GM-CSF/CSF2 Protein

Catalog Number: EXRP004

**EXREprotein™**

More information: [info@exreprotein.com](mailto:info@exreprotein.com)

For Research Use Only. Not Intended for Diagnostic or Therapeutic Use.

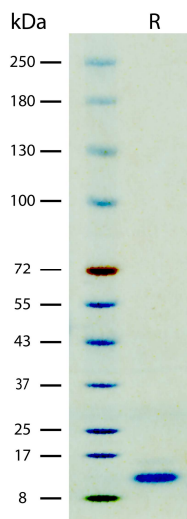
## Product Details

<b>Biological Activity</b>	Determined by a cell proliferation assay using mouse FDC-P1 cells. The ED <sub>50</sub> for this effect is typically <50 pg/mL
<b>Purity</b>	>97% by SDS-PAGE and quantitative densitometry by Coomassie® Blue staining
<b>Endotoxin</b>	<0.5 EU per 1 µg of the protein as determined by the LAL method
<b>Source</b>	Expressed in <i>E. coli</i>
<b>Accession Number</b>	Q14AD9
<b>Sequence</b>	Ala18-Lys141, with an N-terminal Met MAPTRSPITV TRPWKHVEAI KEALNLLDDM PVTLNEEVEV VSNEFSFKKL TCVQTRLKIF EQGLRGNFTK LKGALNMTAS YYQTYCPPTP ETDCEQVTT YADFIDSLKT FLTDIPFECK KPVQK
<b>Molecular Weight</b>	14.3 kDa (monomer, predicted)
<b>Formulation</b>	Lyophilized from sterile PBS with Trehalose, pH 7.4

## Storage and Preparation

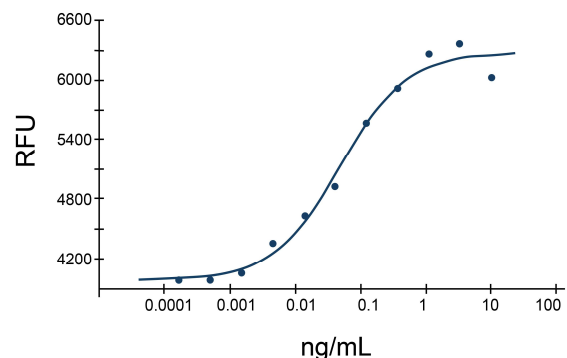
<b>Shipping</b>	Shipped at ambient temperature.
<b>Stability and Storage</b>	<ul style="list-style-type: none"><li>12 months from date of receipt at -20°C to -70°C, <b>lyophilized powder</b>.</li><li>3 months at -20°C to -70°C under sterile conditions <b>after reconstitution</b>.</li></ul> <b>Avoid repeated freeze-thaw cycles.</b>
<b>Reconstitution</b>	Reconstitute at 100 µg/mL in PBS.

## Data Images



**SDS-PAGE Data, Recombinant Mouse GM-CSF**  
Recombinant Mouse GM-CSF (2 µg/lane) on SDS-PAGE under reducing (R) conditions. The gel was stained using Coomassie® Blue showing a single band at 14 kDa and purity greater than 97%.

## Recombinant Mouse GM-CSF



Determined by a cell proliferation assay using mouse FDC-P1 cells. The ED<sub>50</sub> for this effect is typically <50 pg/mL.