

Recombinant Human EGF Protein, Animal Component-Free

Catalog Number: EXRP011-ACF

For Research Use Only. Not Intended for Diagnostic or Therapeutic Use.

EXREprotein™

More information: info@exreprotein.com

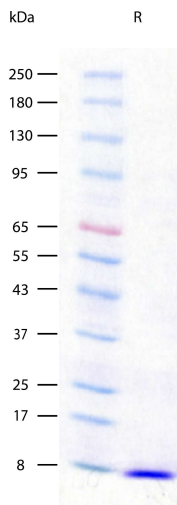
Product Details

Biological Activity	Determined by a cell proliferation assay using BALB/c 3T3 mouse fibroblast cells. The ED ₅₀ for this effect is typically <100 pg/mL.
Purity	>97% by SDS-PAGE and quantitative densitometry by Coomassie® Blue staining
Endotoxin	<0.01 EU per 1 ug of the protein as determined by the LAL method
Source	Expressed in <i>E. coli</i> using an animal component-free system.
Accession Number	P01133
Sequence	Asn971-Arg1023, with an N-terminal Met MNSDSECPLS HDGYCLHDGV CMYIEALDKY ACNCVVG YIG ERCQYRDLKW WELR
Molecular Weight	6.4 kDa (predicted)
Formulation	Lyophilized from sterile PBS with Trehalose, pH 7.4

Storage and Preparation

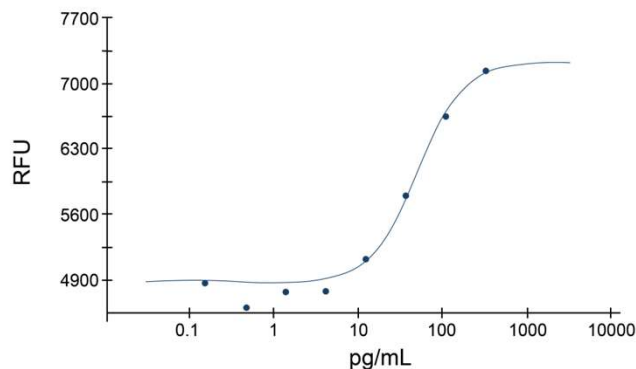
Shipping	Shipped at ambient temperature.
Stability and Storage	<ul style="list-style-type: none">12 months from date of receipt at -20°C to -70°C, lyophilized powder.3 months at -20°C to -70°C under sterile conditions after reconstitution. Avoid repeated freeze-thaw cycles.
Reconstitution	Reconstitute at 100 ug/mL in sterile PBS.

Data Images



SDS-PAGE Data, Recombinant Human EGF
Recombinant Human EGF (2 ug/lane) on SDS-PAGE under reducing (R) conditions. The gel was stained using Coomassie® Blue showing a single band at 6 kDa and purity greater than 97%.

Recombinant Human EGF



Determined by a cell proliferation assay using BALB/c 3T3 mouse fibroblast cells. The ED₅₀ for this effect is typically <100 pg/mL.