

# Recombinant Human IL-6 Protein

Catalog Number: EXRP016

**EXREprotein™**

More information: [info@exreprotein.com](mailto:info@exreprotein.com)

For Research Use Only. Not Intended for Diagnostic or Therapeutic Use.

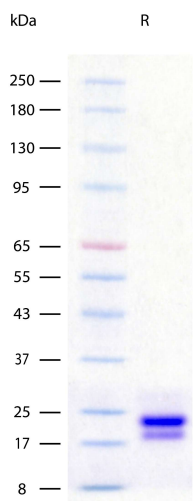
## Product Details

<b>Biological Activity</b>	Determined by a cell proliferation assay using DS1 mouse lymphoblast cells. The ED <sub>50</sub> for this effect is typically 10-100 pg/mL.
<b>Purity</b>	>97% by SDS-PAGE and quantitative densitometry by Coomassie® Blue staining
<b>Endotoxin</b>	<1.0 EU per 1 ug of the protein as determined by the LAL method
<b>Source</b>	Expressed in CHO cell line.
<b>Accession Number</b>	P05231
<b>Sequence</b>	Val30-Met212 VPPGEDSKDV AAPHRQPLTS SERIDKQIRY ILDGISALRK ETCNKSNMCE SSKEALAENN LNLPKMAEKD GCFQSGFNEE TCLVKIITGL LEFEVYLEYL QNRFESSEEQ ARAVQMSTKV LIQFLQKKAK NLDAITTPDP TTNASLLTKL QAQNQWLQDM TTHLILRSFK EFLQSSLRAL RQM
<b>Molecular Weight</b>	20.8 kDa (predicted), 20-23 kDa (glycosylated, observed on SDS-PAGE gel stained with Coomassie® Blue)
<b>Formulation</b>	Lyophilized from sterile PBS with Trehalose, pH7.4

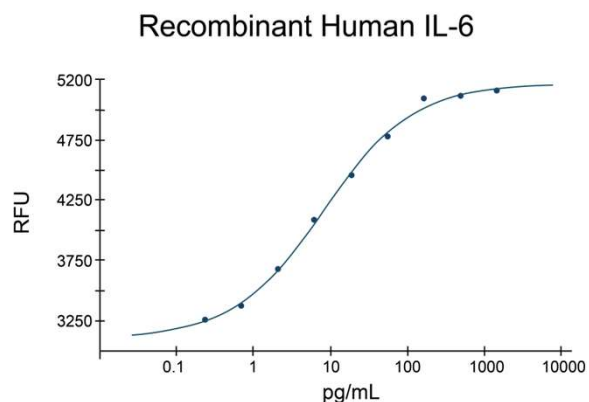
## Storage and Preparation

<b>Shipping</b>	Shipped at ambient temperature.
<b>Stability and Storage</b>	<ul style="list-style-type: none"><li>12 months from date of receipt at -20°C to -70°C, <b>lyophilized powder</b>.</li><li>3 months at -20°C to -70°C under sterile conditions <b>after reconstitution</b>.</li></ul> <b>Avoid repeated freeze-thaw cycles.</b>
<b>Reconstitution</b>	Reconstitute at 100 µg/mL in PBS.

## Data Images



**SDS-PAGE Data, Recombinant Human IL-6**  
Recombinant Human IL-6 (2 µg/lane) on SDS-PAGE under reducing (R) conditions. The gel was stained using Coomassie® Blue with the observed glycosylated molecular weight at 20-23 kDa and purity greater than 97%.



Determined by a cell proliferation assay using DS1 mouse lymphoblast cells. The ED<sub>50</sub> for this effect is typically 10-100 pg/mL.