

# Recombinant Human Thrombopoietin/TPO Protein

Catalog Number: EXRP017

**EXREprotein™**

[info@exreprotein.com](mailto:info@exreprotein.com)

For Research Use Only. Not Intended for Diagnostic or Therapeutic Use.

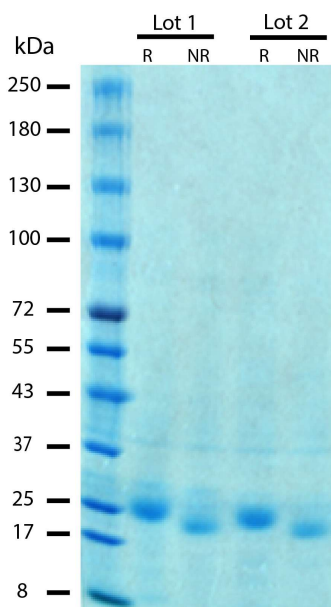
## Product Details

<b>Biological Activity</b>	Determined by a cell proliferation assay using MO7e human cells. The ED <sub>50</sub> for this effect is typically <10 ng/mL.
<b>Purity</b>	>95% by SDS-PAGE and quantitative densitometry by Coomassie® Blue staining
<b>Endotoxin</b>	<0.1 EU per 1 µg of the protein as determined by the LAL method
<b>Source</b>	Expressed in CHO cells
<b>Accession Number</b>	P40225
<b>Sequence</b>	Ser22-Leu195 SPAPPACDLR VLSKLLRDSH VLHSRLSQCP EVHPLPTPVL LPAVDFSLGE WKTQMEETKA QDILGAVTLL LEGVMAARGQ LGPTCLSSLL QLSGQVRLR LGALQSLLGT QLPPQGRTTA HKDPNAIFLS FQHLLRGKVR FLMLVGGSTL CVRRAPPTTA VPSRTSLVLT LNEL
<b>Molecular Weight</b>	18.7 kDa (monomer, predicted). 20 kDa and 18 kDa (glycosylated, observed on SDS-PAGE gel stained with stained using Coomassie® Blue under reducing and non-reducing conditions, respectively)
<b>Formulation</b>	Lyophilized from sterile PBS with Trehalose, pH 7.4

## Storage and Preparation

<b>Shipping</b>	Shipped at ambient temperature.
<b>Stability and Storage</b>	<ul style="list-style-type: none"><li>12 months from date of receipt at -20°C to -70°C, <b>lyophilized powder</b>.</li><li>3 months at -20°C to -70°C under sterile conditions <b>after reconstitution</b>.</li></ul> <b>Avoid repeated freeze-thaw cycles.</b>
<b>Reconstitution</b>	Reconstitute at 100 µg/mL in sterile PBS.

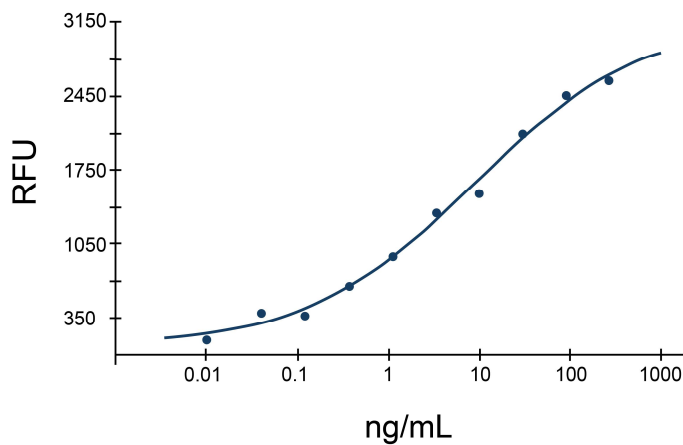
## Data Images



### SDS-PAGE Data.

Recombinant Human Thrombopoietin/TPO Protein (2 µg/lane) on SDS-PAGE under reducing (R) and non-reducing (NR) conditions. The gel was stained using Coomassie® Blue showing a single band at 20 kDa and 18 kDa, respectively, and purity greater than 95%.

### Recombinant Human TPO



Determined by a cell proliferation assay using MO7e human cells. The ED<sub>50</sub> for this effect is typically <10 ng/mL.