

EXREsolve™ Prestained Protein Markers 2.7-40 kDa

Catalog Number: EXBR022



For Research Use Only. Not Intended for Diagnostic or Therapeutic Use.

Product Description

The EXREsolve™ Prestained Protein Markers product is composed of 9 purified pre-stained proteins with a molecular weight range of 2.7 kDa to 40 kDa. The individual protein markers are 2.7 kDa, 4.2 kDa, 6.5 kDa, 10 kDa, 15 kDa, 20 kDa, 25 kDa, 30 kDa and 40 kDa. The 10 kDa marker is green, the 40 kDa marker is orange-red, and the other 7 markers are blue. This product is suitable as a protein molecular weight standard for SDS-PAGE or Western blot and is compatible with PVDF, nylon, and nitrocellulose membranes. The prestained markers enable direct observation of the protein electrophoresis status and estimation of protein transfer during Western Blot.

The product is a ready-to-use liquid that does not require heating, dilution or additional reducing agents before loading sample.

Available sizes: 1 Pack (250 uL) or 5 Pack (5 x 250 uL)

Limitations

- For Research Use Only. Not Intended for Diagnostic or Therapeutic Use.

Precautions

- Always wear appropriate protective clothing and follow safe laboratory procedures.
- The product contains a small amount of DTT.

Storage

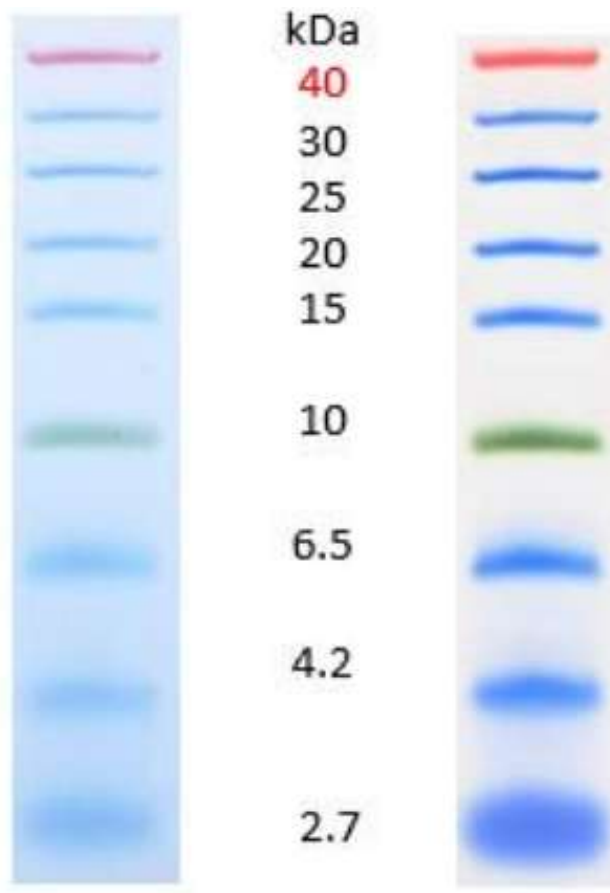
- Shipped on blue ice.
- Store at -20°C for up to 12 months. **Avoid repeated freeze-thaw cycles.**
- **Storage Buffer:** 62.5 mM Tris-H₃PO₄ (pH 7.5 at 25°C), 2% (w/v) SDS, 2 mM EDTA, 0.02% (v/v) ProClin™300, 33% (v/v) glycerol, 5mM DTT.

Protocol

1. Thaw at room temperature for a few minutes prior to use. **Do not boil.**
2. Load the following recommended volumes on an SDS-polyacrylamide gel:
 - 5 uL per well for mini gel (0.75-1.0 mm thickness)
 - It is recommended that each laboratory determine the optimal volume based on the experimental protocol.
 - Volumes may need to be increased for low-percentage gels (<8%), large gels, or gel thickness ≥ 1.5 mm.

- Note:**
- Transfer times of high molecular weight proteins (>100 kDa) during Western blotting may need to be increased.
 - The low molecular weight protein markers may migrate with the dye front in low-percentage gels (<8%).
 - The mobility of the prestained protein markers may be affected by various buffers and gel concentrations. To achieve suitable approximation of molecular weight determination, it is recommended to calibrate against unstained standards using the same conditions.
 - It is not recommended to add SDS to the transfer solution. If SDS must be used, it is recommended to not exceed 0.02-0.04%.

Figure 1. EXREsolve™ Prestained Protein Markers 2.7-40 kDa Typical Data



18% Tricine Blot

ProClin is a trademark of The Dow Chemical Company or an affiliated company of Dow.