

# alpha-Tubulin Antibody

Catalog Number: EXAB004

Size: 100 ug

For Research Use Only. Not Intended for Diagnostic or Therapeutic Use.

**EXREprotein™**

info@exreprotein.com

## Product Details

Source	Monoclonal Mouse	
Specificity	Detects human, mouse, rat, and fruit fly alpha-Tubulin	
Immunogen	Recombinant Tubulin alpha-1A chain protein	
Purification	Antigen affinity chromatography	
Formulation	PBS, pH 7.4, containing 0.5% BSA, 0.02% sodium azide as a preservative and 50% glycerol.	
Concentration	1 mg/mL	
Applications	Western blot	1:500-10,000 recommended dilution
	Immunofluorescence	1:200 recommended dilution
	Immunohistochemistry	1:50-300 recommended dilution
	Immunoprecipitation	1:200 recommended dilution

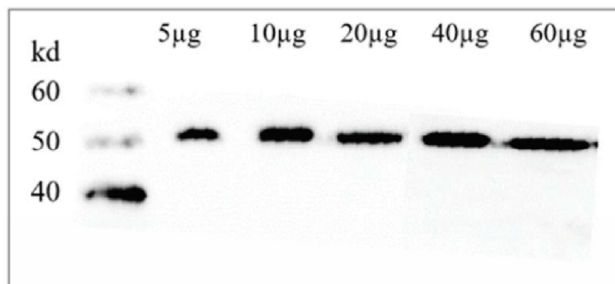
*For optimal performance, this reagent should be titrated for each application.*

## Storage and Preparation

Shipping	Shipped with blue ice.
Stability and Storage	12 months from date of receipt at -15°C to -25°C.

## Data Images

### alpha-Tubulin Antibody



Western blot

**Detection of alpha-Tubulin by Western blot.** Endogenous alpha-Tubulin was detected at approximately 52 kDa using Catalog # EXAB004 at 1:5,000 dilution, secondary antibody at 1:10,000 dilution.