

GAPDH Antibody

Catalog Number: EXAB005

Size: 100 ug

For Research Use Only. Not Intended for Diagnostic or Therapeutic Use.

EXREprotein™

info@exreprotein.com

Product Details

Source	Monoclonal Mouse	
Specificity	Detects human, mouse, rat, canine, chicken, hamster, porcine, rabbit, sheep, insect, and yeast GAPDH.	
Immunogen	GAPDH synthetic peptide	
Purification	Antigen affinity chromatography	
Formulation	PBS, pH 7.4, containing 0.5% BSA, 0.02% sodium azide as a preservative and 50% glycerol.	
Concentration	1 mg/mL	
Applications	Western blot	1:5,000-20,000 recommended dilution
	Immunofluorescence	1:200 recommended dilution
	Immunohistochemistry	1:200-300 recommended dilution

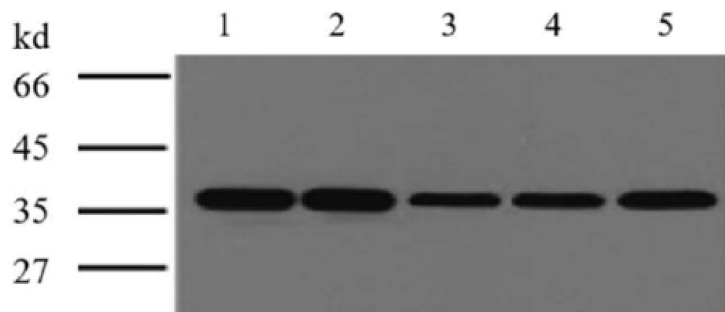
For optimal performance, this reagent should be titrated for each application.

Storage and Preparation

Shipping	Shipped with blue ice.
Stability and Storage	12 months from date of receipt at -15°C to -25°C.

Data Images

GAPDH Antibody



Western blot

Detection of GAPDH by Western blot.

Endogenous GAPDH was detected at approximately 37 kDa using Catalog # EXAB005 at 1:10,000 dilution, secondary antibody at 1:10,000 dilution. Samples were loaded into the lanes: 1) HeLa cells, 2) rat brain tissue, 3) rabbit muscle tissue, 4) sheep muscle tissue, and 5) mouse brain tissue.