

DYKDDDDK Tag Antibody

Catalog Number: EXAB006

Size: 100 ug

For Research Use Only. Not Intended for Diagnostic or Therapeutic Use.

EXREprotein™

info@exreprotein.com

Product Details

Source	Recombinant Monoclonal Mouse IgG ₁	
Specificity	Detects both N-terminal and C-terminal DYKDDDDK (FLAG®) epitope-tagged proteins.	
Immunogen	DYKDDDDK synthetic peptide	
Purification	Antigen affinity chromatography	
Formulation	PBS, pH 7.4, containing 0.5% BSA, 0.02% sodium azide as a preservative and 50% glycerol.	
Concentration	1 mg/mL	
Applications	Western blot	1:10,000-50,000 recommended dilution
	Immunofluorescence	1:1,000-3,000 recommended dilution
	Immunoprecipitation	1:100-200 recommended dilution

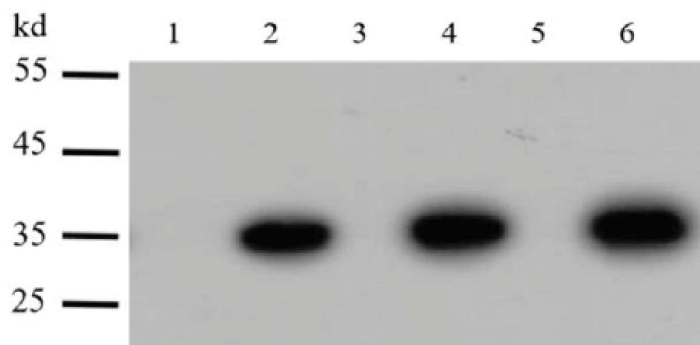
For optimal performance, this reagent should be titrated for each application.

Storage and Preparation

Shipping	Shipped with blue ice.
Stability and Storage	12 months from date of receipt at -15°C to -25°C.

Data Images

DYKDDDDK Antibody



Western blot

Detection of DYKDDDDK Tag by Western blot. DYKDDDDK epitope-tagged proteins were detected using Catalog # EXAB006 at 1:10,000 dilution, secondary antibody at 1:10,000 dilution. Non-tagged proteins were loaded in lanes 1, 3, 5 and DYKDDDDK tagged proteins were loaded in lanes 2, 4, and 6.

FLAG is a registered trademark of Sigma-Aldrich Biotechnology.