

GST Tag Antibody

Catalog Number: EXAB007

Size: 100 ug

For Research Use Only. Not Intended for Diagnostic or Therapeutic Use.

EXREprotein™

info@exreprotein.com

Product Details

Source	Monoclonal Mouse	
Specificity	Detects internal, N-terminal, and C-terminal GST epitope-tagged proteins.	
Immunogen	Recombinant GST epitope tag	
Purification	Antigen affinity chromatography	
Formulation	PBS, pH 7.4, containing 0.5% BSA, 0.02% sodium azide as a preservative and 50% glycerol.	
Concentration	1 mg/mL	
Applications	Western blot	1:5,000 recommended dilution
	Immunoprecipitation	1:200-500 recommended dilution

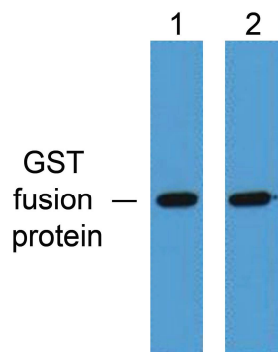
For optimal performance, this reagent should be titrated for each application.

Storage and Preparation

Shipping	Shipped with blue ice.
Stability and Storage	12 months from date of receipt at -15°C to -25°C.

Data Images

GST Tag Antibody



Western blot

Detection of GST Tag by Western blot.

GST epitope-tagged proteins were detected using Catalog # EXAB007 at 1:5,000 dilution (lane 1) and 1:10,000 dilution (lane 2).