

HA Tag Antibody

Catalog Number: EXAB008

Size: 100 ug

For Research Use Only. Not Intended for Diagnostic or Therapeutic Use.

EXREprotein™

info@exreprotein.com

Product Details

Source	Monoclonal Mouse	
Specificity	Detects internal, N-terminal, and C-terminal HA epitope-tagged proteins.	
Immunogen	HA (hemagglutinin) epitope synthetic peptide (amino acids 98-106)	
Purification	Antigen affinity chromatography	
Formulation	PBS, pH 7.4, containing 0.5% BSA, 0.02% sodium azide as a preservative and 50% glycerol.	
Concentration	1 mg/mL	
Applications	Western blot Immunofluorescence Immunoprecipitation	1:5,000 recommended dilution 1:1,000 recommended dilution 1:200 recommended dilution

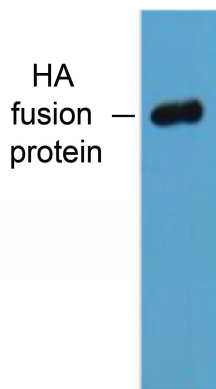
For optimal performance, this reagent should be titrated for each application.

Storage and Preparation

Shipping	Shipped with blue ice.
Stability and Storage	12 months from date of receipt at -15°C to -25°C.

Data Images

HA Tag Antibody



Western blot

Detection of HA Tag by Western blot.
HA epitope-tagged protein was detected using Catalog # EXAB008 at 1:10,000 dilution.