

# MBP Tag Antibody

Catalog Number: EXAB009

Size: 100 ug

For Research Use Only. Not Intended for Diagnostic or Therapeutic Use.

**EXRE**protein™

info@exreprotein.com

## Product Details

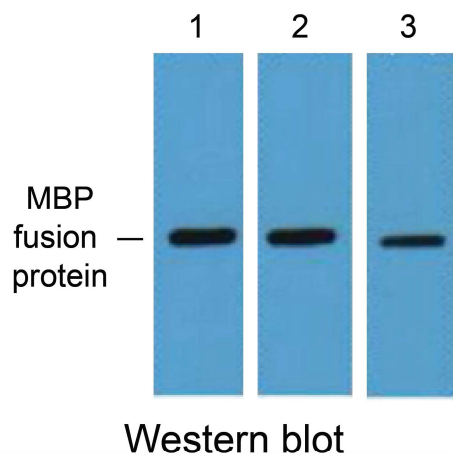
Source	Monoclonal Mouse
Specificity	Detects MBP and MBP epitope-tagged proteins.
Immunogen	Recombinant MBP (Maltose Binding Protein)-tag protein
Purification	Antigen affinity chromatography
Formulation	PBS, pH 7.4, containing 0.5% BSA, 0.02% sodium azide as a preservative and 50% glycerol.
Concentration	1 mg/mL
Applications	Western blot 1:5,000 recommended dilution <i>For optimal performance, this reagent should be titrated for each application.</i>

## Storage and Preparation

Shipping	Shipped with blue ice.
Stability and Storage	12 months from date of receipt at -15°C to -25°C.

## Data Images

### MBP Tag Antibody



**Detection of MBP Tag by Western blot.** MBP epitope-tagged protein was detected using Catalog # EXAB009 at 1:3,000 dilution (lane 1), 1:5,000 dilution (lane 2), and 1:10,000 dilution (lane 3).