

Myc Tag Antibody

Catalog Number: EXAB010

Size: 100 ug

For Research Use Only. Not Intended for Diagnostic or Therapeutic Use.

EXREprotein™

info@exreprotein.com

Product Details

Source	Monoclonal Mouse
Specificity	Detects Myc epitope-tagged proteins.
Immunogen	Myc epitope tag synthetic peptide
Purification	Antigen affinity chromatography
Formulation	PBS, pH 7.4, containing 0.5% BSA, 0.02% sodium azide as a preservative and 50% glycerol.
Concentration	1 mg/mL
Applications	Western blot Immunofluorescence Immunoprecipitation

1:5,000 recommended dilution

1:1,000 recommended dilution

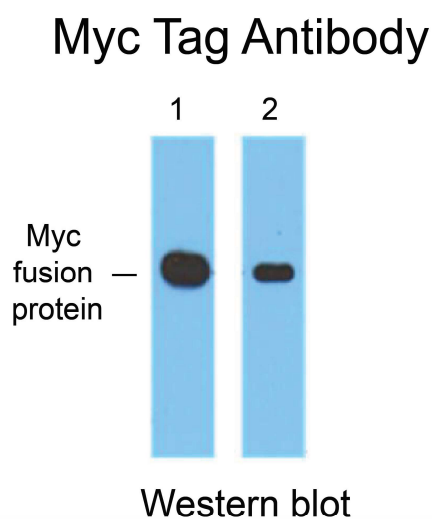
1:200 recommended dilution

For optimal performance, this reagent should be titrated for each application.

Storage and Preparation

Shipping	Shipped with blue ice.
Stability and Storage	12 months from date of receipt at -15°C to -25°C.

Data Images



Detection of Myc Tag by Western blot.

Myc epitope-tagged proteins were detected using Catalog # EXAB010 at 1:5,000 dilution (lane 1) and 1:10,000 dilution (lane 2).