

# beta-Tubulin Antibody

Catalog Number: EXAB011

Size: 100 ug

For Research Use Only. Not Intended for Diagnostic or Therapeutic Use.

**EXRE**protein™

info@exreprotein.com

## Product Details

Source	Monoclonal Mouse	
Specificity	Detects human, mouse, rat, bovine, canine, chicken, fish, hamster, rabbit, sheep, insect, and yeast beta-Tubulin	
Immunogen	beta-Tubulin synthetic peptide	
Purification	Antigen affinity chromatography	
Formulation	PBS, pH 7.4, containing 0.5% BSA, 0.02% sodium azide as a preservative and 50% glycerol.	
Concentration	1 mg/mL	
Applications	Western blot	1:5,000 recommended dilution
	Immunofluorescence	1:200 recommended dilution
	Immunohistochemistry	1:200 recommended dilution

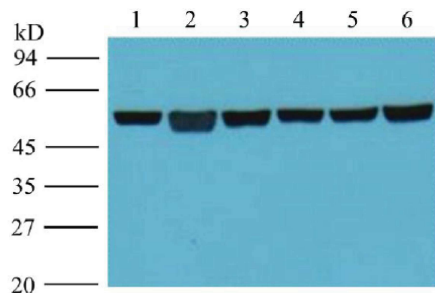
*For optimal performance, this reagent should be titrated for each application.*

## Storage and Preparation

Shipping	Shipped with blue ice.
Stability and Storage	12 months from date of receipt at -15°C to -25°C.

## Data Images

### beta-Tubulin Antibody



Western blot

### Detection of beta-Tubulin by Western blot.

Endogenous beta-Tubulin was detected at approximately 55 kDa using Catalog # EXAB011 at 1:5,000 dilution. Samples were loaded into the lanes: 1) A549 cells, 2) rat brain tissue, 3) mouse tissue, 4) chicken lung tissue, 5) rabbit testis tissue, and 6) sheep muscle tissue.