

# Lamin B1 Antibody

Catalog Number: EXAB013

Size: 100 ug

For Research Use Only. Not Intended for Diagnostic or Therapeutic Use.

**EXREprotein**<sup>™</sup>

info@exreprotein.com

## Product Details

Source	Monoclonal Mouse	
Specificity	Detects endogenous human, mouse, and rat Lamin B1.	
Immunogen	Recombinant Lamin B1 protein	
Purification	Antigen affinity chromatography	
Formulation	PBS, pH 7.4, containing 0.5% BSA, 0.02% sodium azide as a preservative and 50% glycerol.	
Concentration	1 mg/mL	
Applications	Western blot	1:2,000-5,000 recommended dilution
	Immunofluorescence	1:200 recommended dilution
	Immunohistochemistry	1:50-300 recommended dilution
	Immunoprecipitation	1:200 recommended dilution

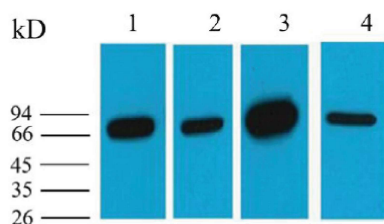
*For optimal performance, this reagent should be titrated for each application.*

## Storage and Preparation

Shipping	Shipped with blue ice.
Stability and Storage	12 months from date of receipt at -15°C to -25°C.

## Data Images

### Lamin B1 Antibody



Western blot

### Detection of Lamin B1 by Western blot.

Endogenous Lamin B1 was detected at approximately 68 kDa in 1) HepG2 cell lysates 2) 293T cell lysates, 3) mouse brain tissue, and 4) rat brain tissue using Catalog # EXAB013 at 1:5,000 dilution.