

# beta-Actin Antibody

Catalog Number: EXAB017

Size: 100 ug

For Research Use Only. Not Intended for Diagnostic or Therapeutic Use.

**EXREprotein™**

info@exreprotein.com

## Product Details

<b>Source</b>	Monoclonal Mouse	
<b>Specificity</b>	Detects endogenous human, mouse, rat, bovine, canine, chicken, feline, fish, porcine, and sheep beta-Actin.	
<b>Immunogen</b>	Beta-Actin synthetic peptide, N-terminus (amino acids 1-80)	
<b>Purification</b>	Antigen affinity chromatography	
<b>Formulation</b>	PBS, pH 7.4, containing 0.5% BSA, 0.02% sodium azide as a preservative and 50% glycerol.	
<b>Concentration</b>	1 mg/mL	
<b>Applications</b>	Western blot	1:2,000-10,000 recommended dilution
	Immunofluorescence	1:50-200 recommended dilution
	Immunohistochemistry	1:100-300 recommended dilution

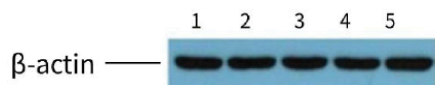
*For optimal performance, this reagent should be titrated for each application.*

## Storage and Preparation

<b>Shipping</b>	Shipped with blue ice.
<b>Stability and Storage</b>	12 months from date of receipt at -15°C to -25°C.

## Data Images

### beta-Actin Antibody



Western blot

#### Detection of beta-Actin by Western blot.

Endogenous beta-Actin was detected at approximately 42 kDa in development maps of proteins from different sources: 1) control, 2) model, 3) Memantine, 4) FQD low dose, and 5) FQD high dose.