

Recombinant Human G-CSF Protein

Catalog Number: EXRP069

EXREprotein™

More information: info@exreprotein.com

For Research Use Only. Not Intended for Diagnostic or Therapeutic Use.

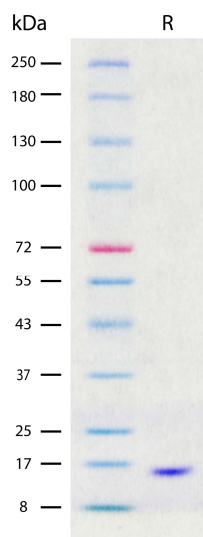
Product Details

Biological Activity	Determined by a cell proliferation assay using mouse M-NFS-60 cells. The ED ₅₀ for this effect is typically 10-50 pg/mL.
Purity	>97% by SDS-PAGE and quantitative densitometry by Coomassie® Blue staining
Endotoxin	<0.02 EU per 1 µg of the protein as determined by the LAL method
Source	Expressed in <i>E. coli</i>
Accession Number	NP_757373.1
Sequence	Thr31-Pro204 TPLGPASSLP QSFLLKCLEQ VRKIQQDGAA LQEKLCATYK LCHPEELVLL GHSLGIPWAP LSSCPSQALQ LAGCLS QLHS GLFLYQGLLQ ALEGISPELG PTLDTLQLDV ADFATTIWQQ MEELGMAPAL QPTQGAMPAF ASAFQRRAGG VLVASHLQSF LEVSYRVL RH LAQP
Molecular Weight	18.7 kDa (monomer, predicted)
Formulation	Lyophilized from sterile Sodium Acetate and Sodium Chloride with Trehalose.

Storage and Preparation

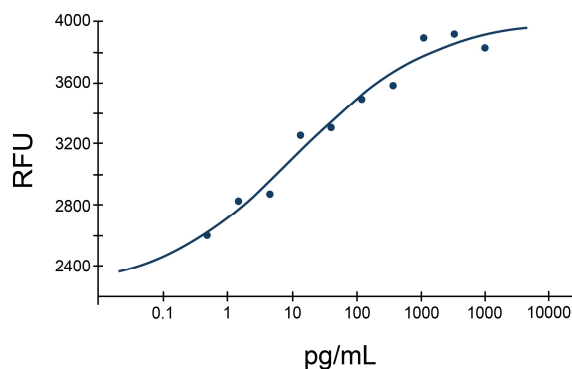
Shipping	Shipped at ambient temperature.
Stability and Storage	<ul style="list-style-type: none">12 months from date of receipt at -20°C to -70°C, lyophilized powder.3 months at -20°C to -70°C under sterile conditions after reconstitution. Avoid repeated freeze-thaw cycles.
Reconstitution	Reconstitute at 100 µg/mL in PBS.

Data Images



Recombinant Human G-CSF (2 µg/lane) on SDS-PAGE under reducing (R) conditions. The gel was stained using Coomassie® Blue showing a single band at approximately 17 kDa and purity greater than 97%.

Recombinant Human G-CSF



Determined by a cell proliferation assay using mouse M-NFS-60 cells. The ED₅₀ for this effect is typically 10-50 pg/mL.